



CCNA v 7.0 Course Brochure

- Enhanced Course Design
- Accelerate Path to Job Readiness
- Improved Outcomes

CCNA Curriculum

Curriculum Overview

The courses in the CCNA Version 7.0 curriculum help students develop a comprehensive foundation for designing, securing, operating, and troubleshooting modern computer networks, on the scale from small business networks to enterprise networks, with an emphasis on hands-on learning and essential career skills like problem solving and collaboration.

Career Prep

By the end of the CCNA course series, students gain practical, hands-on experience preparing them for the CCNA certification exam and career-ready skills for associate-level roles in the Information & Communication Technologies (ICT) industry.

Learning Components

- Series of 3 courses:
 1. Introduction to Networks (ITN)
 2. Switching, Routing, and Wireless Essentials (SRWE)
 3. Enterprise Networking, Security, and Automation (ENSA)
- Hands-on labs and Cisco Packet Tracer network simulation activities
- Videos, activities, and quizzes reinforce learning
- Exams to measure learning outcomes
- Assessment features to ensure exam security and integrity

Features



Target Audience: Students interested in pursuing an IT-related career

Prerequisites: None. Vocational students often take IT Essentials or equivalent knowledge prior to CCNA

Course Delivery: Instructor-led

Estimated Time to Complete: 200 hours

Recommended Next Course: CCNP Enterprise Core, CCNA CyberOps, DevNet Associate, Python or Emerging Tech Workshops



Certification
Aligned

CCNA: Introduction to Networks

Course Overview

The first course in the CCNA curriculum introduces the architectures, models, protocols, and networking elements that connect users, devices, applications and data through the Internet and across modern computer networks - including IP addressing and Ethernet fundamentals.

Benefits

By the end of the course, students can build simple local area networks (LAN) that integrate IP addressing schemes, foundational network security, and perform basic configurations for routers and switches.

Learning Components

- 17 modules
- 24 hands-on labs
- 31 Cisco Packet Tracer activities
- 36 videos
- 10 syntax checkers
- 13 interactive activities
- 64 CYU quizzes
- 17 module exams
- 6 module group exams
- 1 final exam



Features

Target Audience: Secondary vocational students, 2-year and 4-year college students in Networking or Engineering

Prerequisites: None

Instructor Training Required: Yes

Languages: English

Course Delivery: Instructor-led

Course Recognitions: Certificate of Completion, Letter of Merit, Digital Badge

Estimated Time to Complete: 70 hours

Recommended Next Course: CCNA: Switching, Routing, and Wireless Essentials

CCNA: Switching, Routing, and Wireless Essentials

Course Overview

The second course in the CCNA curriculum focuses on switching technologies and router operations that support small-to-medium business networks and includes wireless local area networks (WLAN) and security concepts.

Benefits

Students learn key switching and routing concepts. They can perform basic network configuration and troubleshooting, identify and mitigate LAN security threats, and configure and secure a basic WLAN.

Learning Components

- 16 modules
- 14 hands-on labs
- 31 Cisco Packet Tracer activities
- 15 videos
- 19 syntax checkers
- 1 interactive activity
- 36 CYU quizzes
- 16 module exams
- 5 module group exams
- 1 final exam



Features

Target Audience: Secondary vocational students, 2-year and 4-year college students in Networking or Engineering

Prerequisites: None

Instructor Training Required: Yes

Languages: English

Course Delivery: Instructor-led

Course Recognitions: Certificate of Completion, Letter of Merit, Digital Badge

Estimated Time to Complete: 70 hours

Recommended Next Course: CCNA: Enterprise Networking, Security, and Automation

CCNA: Enterprise Networking, Security, and Automation

Course Overview

The third CCNA course describes the architectures and considerations related to designing, securing, operating, and troubleshooting enterprise networks – including wide area network (WAN) technologies & quality of service (QoS) mechanisms for secure remote access, along with software-defined networking, virtualization, & automation concepts supporting network digitization.

Benefits

Students gain skills to configure and troubleshoot enterprise networks, and learn to identify and protect against cybersecurity threats. They are introduced to network management tools and learn key concepts of software-defined networking, including controller-based architectures and how application programming interfaces (APIs) enable network automation.

Learning Components

- 14 modules
- 12 hands-on labs
- 29 Cisco Packet Tracer activities
- 32 videos
- 13 syntax checkers
- 2 interactive activities
- 53 CYU quizzes
- 14 module exams
- 5 module group exams
- 1 final exam
- 1 practice exam for CCNA certification exam



Features

Target Audience: 2-year and 4-year college students in Networking or Engineering

Prerequisites: None

Instructor Training Required: Yes

Languages: English

Course Delivery: Instructor-led

Course Recognitions: Certificate of Completion, Letter of Merit, Digital Badge

Estimated Time to Complete: 70 hours

Recommended Next Course: CCNP Enterprise Core



CCNA 7.0 Course Outlines

Intro to Networks (ITN)

Networking Today
Basic Switch and End Device Configuration
Protocol Models
Physical Layer
Number Systems
Data Link Layer
Ethernet Switching
Network Layer
Address Resolution
Basic Router Configuration
IPv4 Addressing
IPv6 Addressing
ICMP
Transport Layer
Application Layer
Network Security Fundamentals
Build a Small Network

Switching, Routing, and Wireless Essentials (SRWE)

Basic Device Configuration
Switching Concepts
VLANs
Inter-VLAN Routing
STP
Etherchannel
DHCPv4
SLAAC and DHCPv6 Concepts
FHRP Concepts
LAN Security Concepts
Switch Security Configuration
WLAN Concepts
WLAN Configuration
Routing Concepts
IP Static Routing
Troubleshoot Static and Default Routes

Enterprise Networking, Security and Automation (ENSA)

Single-Area OSPFv2 Concepts
Single-Area OSPFv2 Configuration
WAN Concepts
Network Security Concepts
ACL Concepts
ACLs for IPv4 Configuration
NAT for IPv4
VPN and IPsec Concepts
QoS Concepts
Network Management
Network Design
Network Troubleshooting
Network Virtualization
Network Automation



Complementary Options

CCNP Enterprise (ENCOR, ENARSI)

or

CCNA Security / CCNA CyberOps

or

DevNet Associate

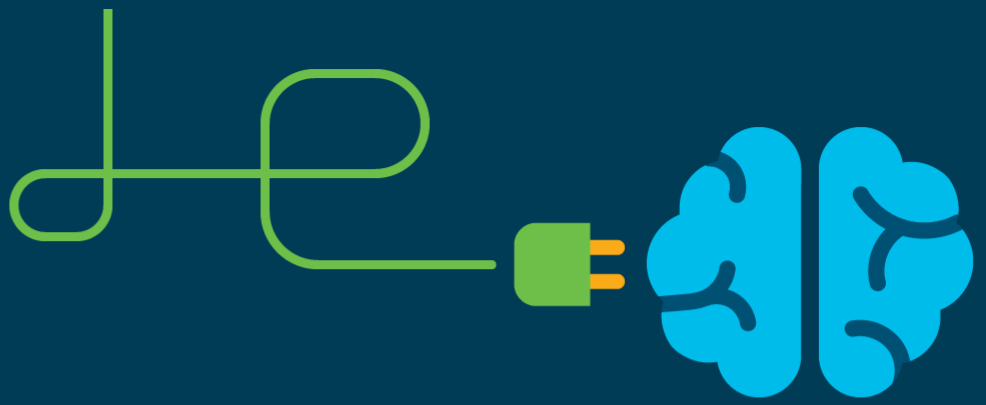
or

Python / ETWs

or lead with

IT Essentials

 New/significantly changed content



Contact us

Address:

1 Dungarvan West Road,
Borrowdale Harare, Zimbabwe

Call/App: +263 774 020 715

Email: info@lindnet.co.zw /
info@lindnet.ac.zw

Website: www.lindnet.ac.zw

